



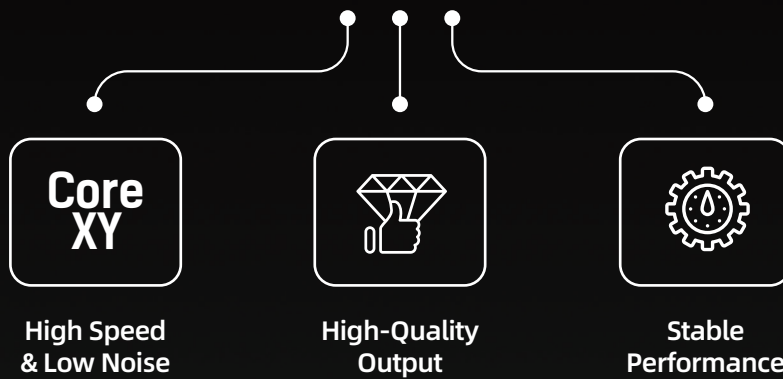
THE
PROFESSIONAL'S
FIRST CHOICE



Guider 3 Plus

Guider 3 Plus

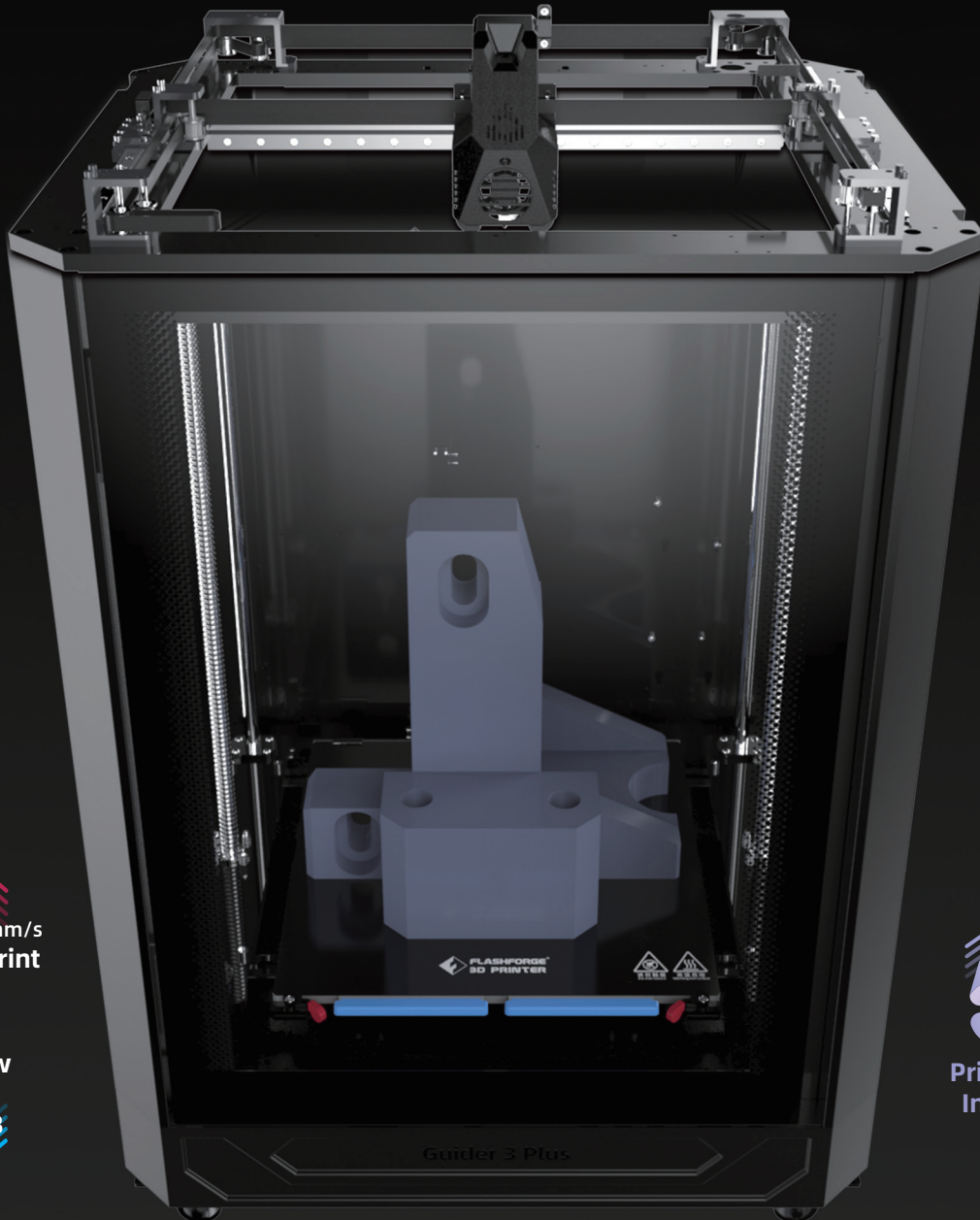
Guider 3 Plus is a professional-grade 3D printer, featuring high-speed printing, high model quality output, quiet and smooth operation. Equipped with a full range of multi-platform intelligent management system for small business, studio, universities and laboratories, Guider 3 Plus assists engineers and designers in rapid prototyping.



CoreXY

Faster & Quieter

The CoreXY structure allows high-speed printing at **250mm/s**
and operating environment noise below **50dB**.



250 mm/s
High-Speed Print

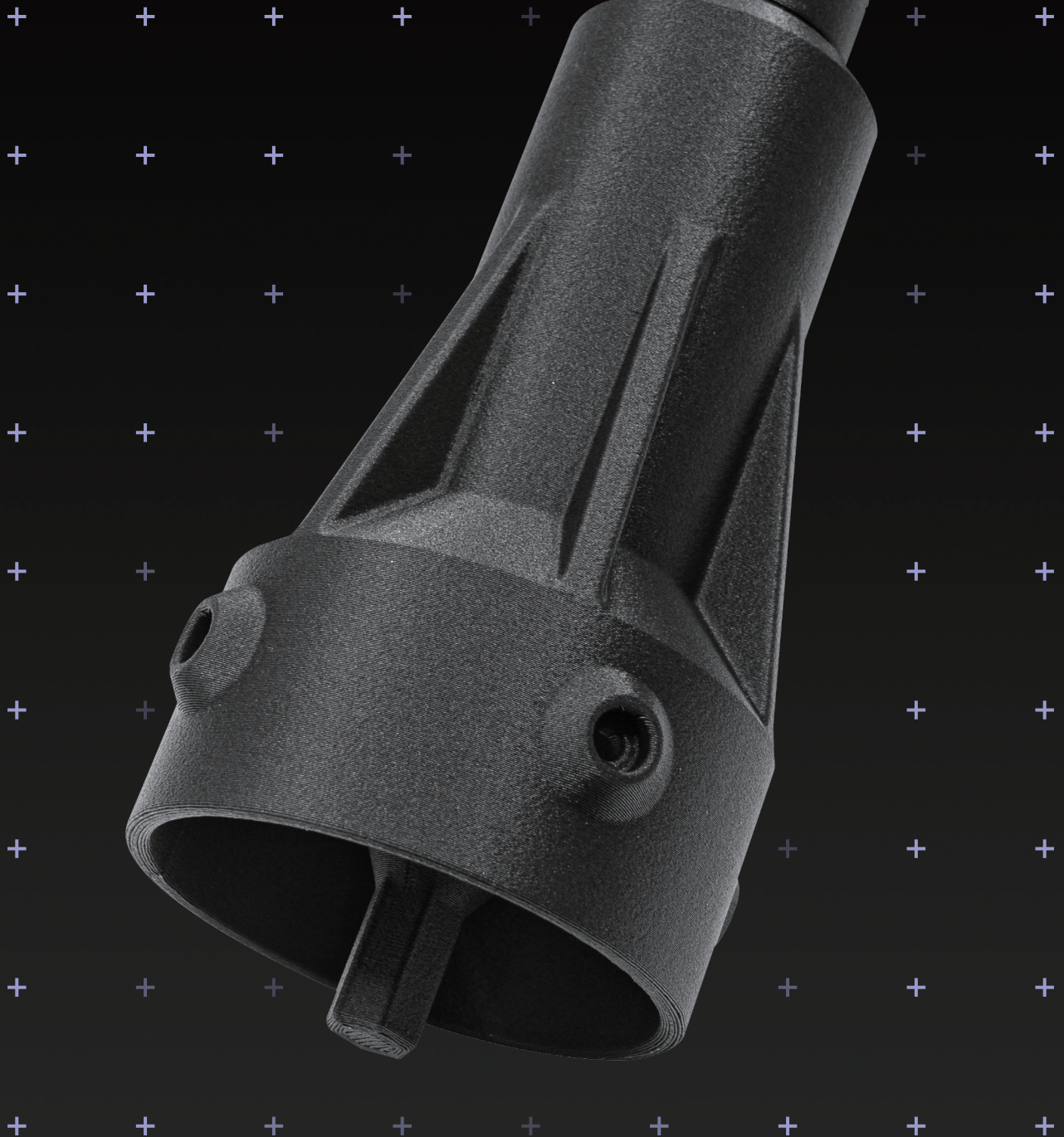
Noise Below
50 dB

50%
Printing Speed
Increased by

Superior

Model Surface Details

The dual Z-axis ball screw design ensures accurate positioning when printing each layer of the model, smooth model surface and better printing quality.



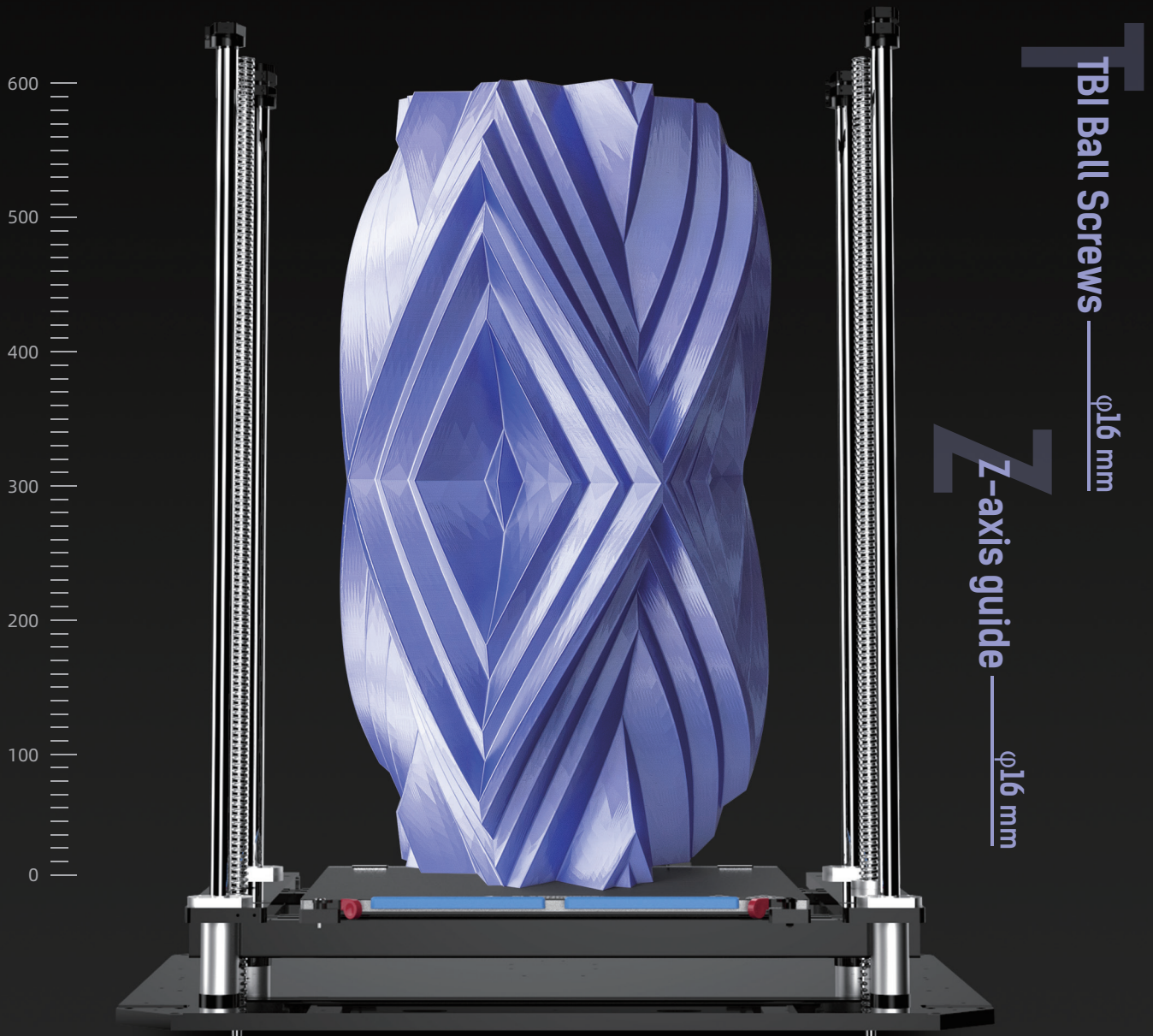


24/7 Uninterrupted Steady Movement

With the 16mm-diameter Z-axis guide and 16mm TBI ball screws on both sides, the platform can support a maximum load bearing capacity of 30KG, ensuring the stability of printing large models.

350x350x600mm

Maximum Build Volume



Sealed Filament Chamber Containing Desiccant

Containing silica gel desiccant inside, the dual sealed filament chambers on the back will effectively ensure that filaments are in a sealed and dry environment both during the printing process and in the idle state. Worry-free storage, free use and printing quality guaranteed.

A single chamber can hold 1KG filament. With a hygrometer equipped, the humidity prompt can be visually viewed, making it easy for users to accurately manage the filament environment.

HEPA 13 Air Filtration System

HEPA air filtration system can effectively filter the dust odor and particles generated during the printing process, and support discharging gas through pipe connected outside, thus ensuring an environment-friendly and safe working environment.



Open Material System

Compatible with Third-party Filaments

PLA

ABS

HIPS

Nylon

PC

PETG

ASA

Glass Fiber Reinforced

Carbon Fiber Reinforced

Note: Glass fiber reinforced and carbon fiber reinforced filaments need to be used with a high-strength nozzle.

◆ Third-party Filaments Supported

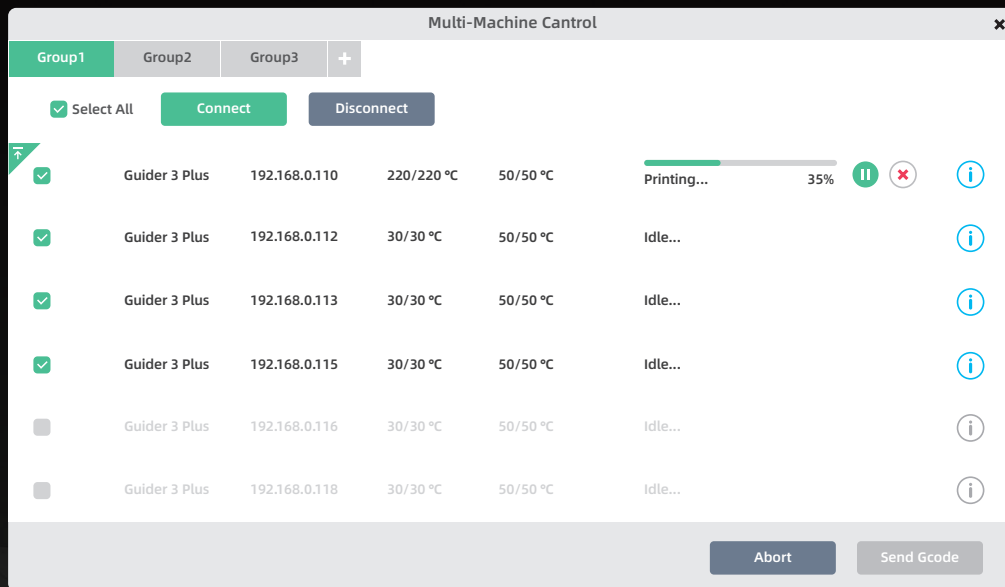
Open third-party material configuration. FlashPrint is compatible with multi-brand filaments, providing wider choices.




320°C
High-Temperature
Extruder

Intelligent Multi-platform Management

It supports remote multi-platform management of 3D printers via **FlashPrint 5** and **FlashCloud**. With online printing and real-time monitoring, it realizes efficient integrated equipment management and worry-free production.



The screenshot displays the 'Multi-Machine Control' software interface. At the top, there are tabs for 'Group1', 'Group2', and 'Group3', along with a '+' icon. Below the tabs, there are buttons for 'Select All' (checked), 'Connect', and 'Disconnect'. The main area contains a table of printer information:

Group	Printer Model	IP Address	Temperature 1	Temperature 2	Status	Progress	Control	Info
Group1	Guider 3 Plus	192.168.0.110	220/220 °C	50/50 °C	Printing...	35%	Pause, Stop	Info
Group1	Guider 3 Plus	192.168.0.112	30/30 °C	50/50 °C	Idle...			Info
Group1	Guider 3 Plus	192.168.0.113	30/30 °C	50/50 °C	Idle...			Info
Group1	Guider 3 Plus	192.168.0.115	30/30 °C	50/50 °C	Idle...			Info
Group1	Guider 3 Plus	192.168.0.116	30/30 °C	50/50 °C	Idle...			Info
Group1	Guider 3 Plus	192.168.0.118	30/30 °C	50/50 °C	Idle...			Info

At the bottom of the interface, there are buttons for 'Abort' and 'Send Gcode'.



Application Areas

Product Development Verification

- Shorten verification time
- Accelerate design optimization
- Speed up mass production while reduce costs



Jigs, Fixtures & Parts of the Assembly Line

- Jigs and fixtures for assembly
- Replenish damaged equipment parts of the assembly line in time



Finished Parts

- Customized parts
- Temporary test parts
- Parts for small-batch use



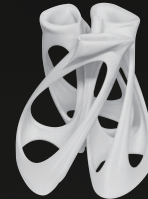
Teaching Aids

- Offer 3D printing training courses
- Print out students' design



Architecture/Art

- Conceptual models
- Customized presentation



Parameters

Extruder Quantity	1
Printing Precision	±0.15 mm
Positioning Accuracy	X/Y-axis 0.011 mm / Z-axis 0.0025 mm
Layer Thickness	0.05 ~ 0.4 mm
Build Volume	350 x 350 x 600 mm
Nozzle Diameter	0.4 [0.4/0.6/0.8 mm]
Nozzle Type	Stainless Steel Nozzle
Printing Speed	10 ~ 250 mm/s
Maximum Extruder Temperature	320 °C
Maximum Platform Temperature	120 °C
Supported Filament	PLA / PETG / ASA / ABS / PC / PA / PLA-CF / PETG-CF PETG GF / PA-CF / PA-GF
Power Supply	AC100-240V / DC24V / 6.25A, 650W
Slicing Software	FlashPrint
Input/Output File Format	Input: 3MF / STL / OBJ / FPP / BMP / PNG / JPG / JPEG Output: GX/G files / Gcode
Connectivity	USB Cable / USB Flash Drive / Ethernet / Wi-Fi
Compatible Operating System	Windows XP / Vista / 7 / 8 / 10 / Mac OS
Compatible Slicing Software	Slic3r / Skeinforge / Cura [Need Setting]
Smart Touch Screen	7-inch
Build Plate	Flexible Steel Plate Platform

Other Features

- Fully-enclosed Design
- Auxiliary Leveling
- Filament Run-out Reminder
- Removable Build Plate
- Quick-release Nozzle
- Power Loss Recovery
- Remote Video Monitoring
- Air Filter Net
- Cloud Platform
- Auto Power-off



Follow Us

Zhejiang Flashforge 3D Technology Co., Ltd.

Address: No.518 XianYuan Road, Jinhua City,Zhejiang Province, China

Service Hotline: +86 579 82273989

support@flashforge.com